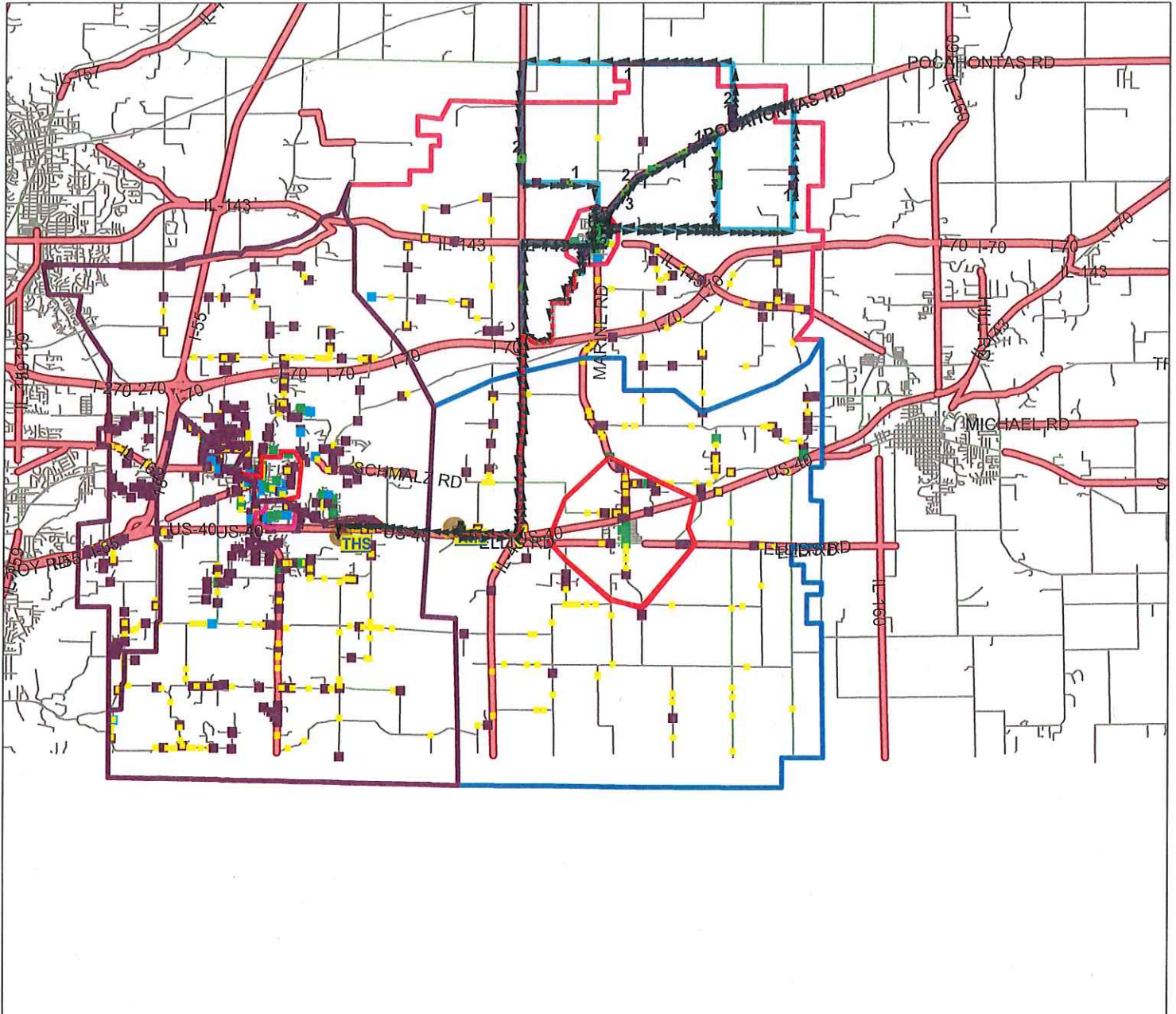


### Triad Community Unit School District 2 Route Map



Route: **913**  
Vehicle: **13**  
Anchor: **THS**  
Start Time: **6:28 AM**  
Pickups: **48**  
Distance: **36.96 mi.**

Desc: **BOB HEWITT**  
Driver: **HEWITT, BOB**  
Max Load: **48**  
Arrival Time: **7:30 AM**  
Transfers On: **0**  
Transfers Off: **0**  
Days: **MTWHF**

**Triad Community Unit School District 2  
Bus Driver Directions For 913 BOB HEWITT MS/HS AM**

Route: 913 BOB HEWITT  
 Bus: 13  
 Driver: HEWITT, BOB  
 Anchor: TRIAD HIGH SCHOOL

Start Time: 06:28 am  
 End Time: 07:30 am  
 Total Time: 61:27  
 Distance: 36.96 mi.

Total Riders: 48  
 Max Load: 48  
 Route Days: MTWHF  
 Schedule Day: Monday

Driver Sign-On Time: N/A

Driver Sign-Off Time: N/A

		Distance	Pick Up	Drop Off
6:28 am	<b>START</b>	<b>1831 IL-4</b>		
	Start on	IL-4		
	Right turn at	IL-143		
	Continue on	W DIVISION ST		
	Continue on	E DIVISION ST		
	Left turn at	N MAWDSLEY ST		
	Right turn at	E ALTON ST		
	Continue on	MAYER RD		
6:40 am	<b>STOP</b>	<b>11231 MAYER RD</b>	1	
	Continue on	MAYER RD		
	Left turn at	BUFFALO RD		
6:43 am	<b>STOP</b>	<b>BUFFALO RD @ QUAIL RUN</b>	1	
	Continue on	BUFFALO RD		
	Left turn at	POCAHONTAS RD		
	Right turn at	WAGNER RD		
6:46 am	<b>STOP</b>	<b>4335 WAGNER RD</b>	1	
	Continue on	WAGNER RD		
6:47 am	<b>STOP</b>	<b>4413 WAGNER RD</b>	2	
	Continue on	WAGNER RD		
	Left turn at	FRUIT RD		
6:50 am	<b>STOP</b>	<b>10724 FRUIT RD</b>	1	
	Continue on	FRUIT RD		
	Left turn at	IL-4		
6:56 am	<b>STOP</b>	<b>4153 IL-4</b>	2	
	Continue on	IL-4		
	Left turn at	GILOMEN RD		
6:57 am	<b>STOP</b>	<b>10313 GILOMEN RD</b>	1	
	Continue on	GILOMEN RD		
	Right turn at	MARINE RD		
	Continue on	N DUNCAN ST		
	Left turn at	GRANTFORK RD		
	Continue on	POCAHONTAS RD		
7:00 am	<b>STOP</b>	<b>10664 POCAHONTAS RD</b>	3	
	Continue on	POCAHONTAS RD		
7:01 am	<b>STOP</b>	<b>10725 POCAHONTAS RD</b>	2	
	Continue on	POCAHONTAS RD		
7:02 am	<b>STOP</b>	<b>10830 POCAHONTAS RD</b>	1	
	Continue on	POCAHONTAS RD		
7:03 am	<b>STOP</b>	<b>11100 POCAHONTAS ROAD</b>	1	
	Continue on	POCAHONTAS RD		
7:03 am	<b>STOP</b>	<b>11129 POCAHONTAS RD</b>	1	
	Continue on	POCAHONTAS RD		
	Sharp Right at	YANN RD		
7:05 am	<b>STOP</b>	<b>4021 YANN RD</b>	1	
	Continue on	YANN RD		
	Right turn at	MAYER RD		
	Continue on	E ALTON ST		
	Right turn at	N MAWDSLEY ST		

Triad Community Unit School District 2  
 Bus Driver Directions For 913 BOB HEWITT MS/HS AM

			Distance	Pick Up	Drop Off
	Continue on	E LINDEN ST	0.15		
7:10 am	STOP	E LINDEN ST @ N DUNCAN ST		12	
	Left turn at	N DUNCAN ST	0.16		
7:11 am	STOP	N DUNCAN ST @ W SILVER ST		13	
	Continue on	N DUNCAN ST	0.18		
	Continue on	S DUNCAN ST	0.09		
	Right turn at	W UNION ST	0.24		
7:14 am	STOP	W UNION ST @ S OREGON ST		4	
	Left turn at	S OREGON ST	0.41		
	Continue on	BLUMBERG RD	0.10		
7:16 am	STOP	3425 BLUMBERG RD		1	
	Continue on	BLUMBERG RD	2.04		
	Left turn at	IL-4	3.33		
	Bear Right on	US-40	0.99		
	Right turn at	TRIAD MS	0.04		
	Left turn at	TRIAD MS	0.10		
7:24 am	END	TRIAD MIDDLE SCHOOL			25
	Continue on	TRIAD MS	0.14		
	Right turn at	TRIAD MS	0.13		
	Left turn at	TRIAD MS	0.04		
	Right turn at	US-40	1.94		
	Left turn at	TRIAD HS DRIVEWAY	0.10		
7:30 am	DEST	TRIAD HIGH SCHOOL			23